

NEIGHBORHOOD UPDATE

HIGHLAND HOSPITAL
ACUTE TOWER
REPLACEMENT
PROJECT



Satellite Building
Construction
Fence

UPCOMING CONSTRUCTION ACTIVITIES

APRIL 2011

- Demolition of Clinic (V Building) continues.
- Satellite Building foundation preparation continues.
- Truck delivery of construction materials continues.
- Trucking of construction debris to recycling center continues.
- Preparation for the demolition of the C, D, & F Wings begins.
- PG&E gas line installation across 14th Avenue begins.

MAY 2011

- Demolition of Clinic (V Building) continues.
- Satellite Building foundation preparation continues.
- Truck delivery of construction materials continues.
- Trucking of construction debris to recycling center continues.
- Preparation for the demolition of the C, D, & F Wings continues.
- PG&E gas line installation across 14th Avenue continues.

JUNE 2011

- Satellite Building foundation preparation continues.
- Truck delivery of construction materials continues.
- Trucking of construction debris to recycling center continues.
- Preparation for the demolition of the C, D, & F Wings continues.

After the demolition of the V Building, the Satellite Building is ready to be built. For more information about the Past, Present, and Future of the V Building, please continue onto page 2.

FOR MORE INFORMATION

GENERAL SERVICES AGENCY

Ann Ludwig, Program Manager
County of Alameda
510-390-5022
ann.ludwig@acgov.org

ACMC INFORMATION

Andrea Breaux, Public Info Officer
Alameda County Medical Center
510-437-8479
abreaux@acmedctr.org

PLEASE VISIT OUR WEBSITE AT WWW.HIGHLANDATR.ORG

If you have immediate safety or nuisance concerns please call the 24-hour Highland ATR Hotline at (510) 227-0392

The above dates are approximations. Neighborhood updates will be provided on a monthly basis and more frequently when needed.

V BUILDING

PAST

Completed in 1956, the V Building, or Clinic Building as it was referred to then, housed the Emergency Department, the Trauma Center, and various medical clinics for the Highland Campus. The 5-story Clinic Building's design reflected the philosophy of a serious scientific building, dedicated to its function. Not a perfect rectangle, its entry projected at a right angle from the main part of the building and the fifth floor was shorter than the floors below it – each of these irregularities was an expression of the function and need of each space. At the time of its construction, it was considered a state of the art facility providing cutting edge care to its patients.

PRESENT

The departments formally housed in the V Building are now housed in the Highland Hospital K Building.

Currently, the ATR Project is beginning the demolition of the V Building. This process started with soft demolition of the interiors. This included removal of all the non structural material such as, flooring, windows, sheet rock, and heating and air conditioning systems, leaving only the concrete and steel.

The building is now ready for hard demolition. This will involve large heavy equipment breaking off pieces of the concrete structure starting from the top and working towards the foundation. There is no plan to use equipment such as a wrecking ball or explosives to demolish the building. This hard demolition process is expected to take approximately 8 weeks.

Throughout the demolition, the site and surrounding areas will be closely monitored for noise, vibration, and dust. Numerous sensors have been placed around the construction site to monitor these conditions.

As the building is demolished, the debris will be sorted by type into concrete or metal. The metal will be sent for recycling and the concrete will be reused in things such as, road base or gravel. Very little of the debris will go into a landfill. Trucks hauling away the debris will be cleaned prior to leaving the site and any dirt tracked off the site will be promptly cleaned up.

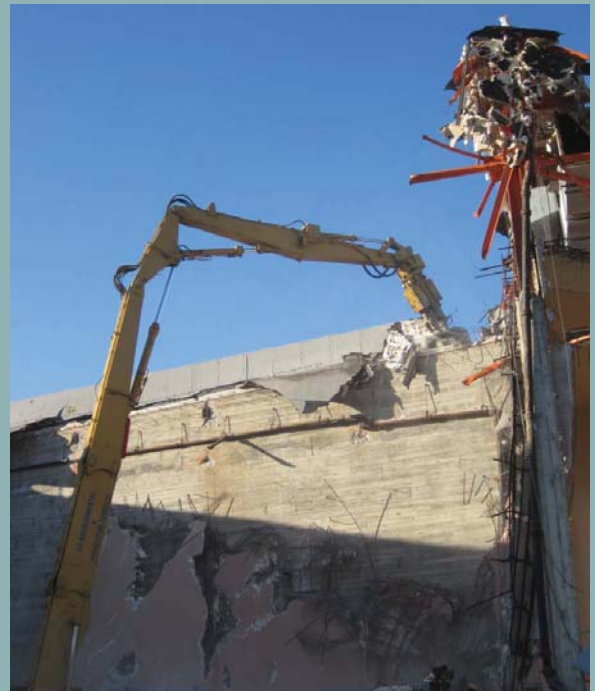
FUTURE

The V Building site will become the home of the new 3-story Satellite Building/Specialty Care Center. The new building will be adjacent to the main entrance and will connect to the existing main hospital. In addition, three underground floors of parking will also be created to allow patients easy access to the services in the new building.

In the tradition of the old Clinic Building, the new building will house modern state of the art outpatient clinic services that will continue providing cutting edge care to its patients.



Clinic Building - V Building



V Building Hard Demolition



Specialty Care Center Rendering

