

NEIGHBORHOOD UPDATE

HIGHLAND HOSPITAL
ACUTE TOWER
REPLACEMENT
PROJECT



The photographs are of the H Building Project, completed in 1969, and the new replacement Acute Care Tower. Aki K. Nakao, Director of the General Services Agency, and Kit Ratcliff, CEO, Principal of Ratcliff Architects, explain their involvement during both of the projects at Highland Hospital on page 2.

UPCOMING CONSTRUCTION ACTIVITIES

OCTOBER 2011

- Installation of concrete walls, columns and floors for the Specialty Care Center continues.
- Installation of electrical lines underground along Stuart Street & East 31st Street begins. This work will involve periodic, temporary lane closures along Stuart Street and East 31st Street.
- Interior demolition of the C, D, & F Wings continues.
- Installation of site utility work for the Acute Care Tower continues.
- Installation of gas lines along 14th Avenue begins. This work will involve periodic, temporary lane closures along 14th Avenue.
- Saturday work (October 1st, 15th, and 29th) is anticipated for the Specialty Care Center site. This work will include installation of reinforcing steel in preparation of pouring concrete floors for the parking garage. Operations on the site will begin at 8 am and complete no later than 5 pm. No equipment or activities will be allowed to begin until 9 am.

NOVEMBER 2011

- Installation of concrete walls, columns and floors for the Specialty Care Center continues.
- Installation of electrical lines underground along Stuart Street & East 31st Street continues. This work will involve periodic, temporary lane closures along Stuart Street and East 31st Street.
- Installation of structural steel for the Specialty Care Center begins.
- Interior demolition of the C, D, & F Wings continues.
- Installation of site utility work for the Acute Care Tower continues.
- Installation of gas lines along 14th Avenue continues. This work will involve periodic, temporary lane closures along 14th Avenue.

DECEMBER 2011

- Installation of structural steel for the Specialty Care Center continues.
- Installation of plumbing, HVAC, and electrical for the Specialty Care Center begins.
- Installation of site utility work for the Acute Care Tower continues.

FOR MORE INFORMATION

GENERAL SERVICES AGENCY

Ann Ludwig, Program Manager
County of Alameda
510-208-9552
ann.ludwig@acgov.org

ACMC INFORMATION

Andrea Breaux, Public Info Officer
Alameda County Medical Center
510-437-8479
abreaux@acmedctr.org

PLEASE VISIT OUR WEBSITE AT WWW.HIGHLANDATR.ORG



If you have immediate safety or nuisance concerns please call the 24-hour Highland ATR Hotline at (510) 227-0392

The above dates are approximations. Neighborhood updates will be provided on a monthly basis and more frequently when needed.

FULL CIRCLE TO STATE OF THE ART HEALTHCARE

During the late 1960's, Aki K. Nakao (AN), Director of the General Services Agency, and Kit Ratcliff (KR), CEO, Principal of Ratcliff Architects, were both architecture students at UC Berkley observing the Highland Hospital H Building Project. Anticipated completion in 2017, the ATR Project will demolish the H Building to build the new Acute Care Tower. Below they describe their full circle experiences at Highland Hospital.

Q: How were you involved in the H Building Project?

KR: I was working as an intern at my father's firm during the summer that the project was being designed. My father's firm, Ratcliff Slama Cadwalader, was designing this project along with the office of Rex Whitaker Allen when I was an architecture student at UC Berkeley. This project was the biggest project my father's firm had ever worked on and was one of the first medical projects in our firm's history. I remember well the folks in charge of the project and am still close friends with some of them today.

AN: I was an architecture student at UC Berkley and one of the studio assignments was to choose a project in construction and make a photographic record of the activities on the constructions site. My studio partner and I went to Highland two to three times a week to take photos of the project over a ten week period. During this time, we could just walk on to the site and go wherever we wanted, including going up the scaffolding to shoot the upper floors. No hardhat, eye protection or vests. No one challenged or stopped us. Once or twice we were asked what we were doing and our answer was that we were architecture students and that seemed to satisfy them.

Q: How would you describe your current involvement in the ATR project?

KR: Our firm, The Ratcliff Architects, along with SKA Architects joined the lead architectural firm, SmithGroup, to plan, design and manage the project. The architectural team is part of the larger Clark Design/Build team, who holds the contract with the County of Alameda to deliver the project.

AN: For the current project, as Director of the General Services Agency, I am the Owner's (County of Alameda) representative responsible for a successful execution and completion of the project. This involves all aspects of design, construction, funds management, cost control and client relations with all the stakeholders carried out by the project team.

Q: Having been involved with the H Building Project, how does that experience influence your perspective and decisions on the ATR Project?

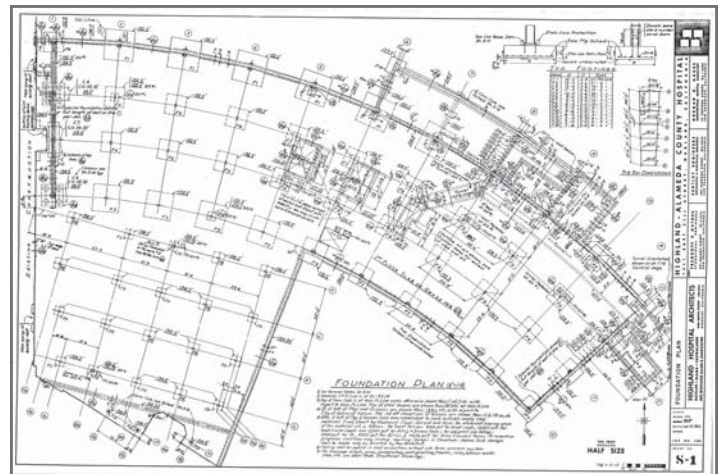
KR: One of the lessons my father's firm learned in the H Building, is that it is hard for nurses and staff to communicate with each other down a curved corridor. So I resisted a solution which had a curved corridor. In addition, the H Building was constructed with a concrete frame and shear walls. While concrete was more economic than steel initially, it is more expensive to seismically retrofit later on. We are building the new Acute Care Tower with a steel frame.

Q: What are some differences between the H Building Project and the current ATR Project?

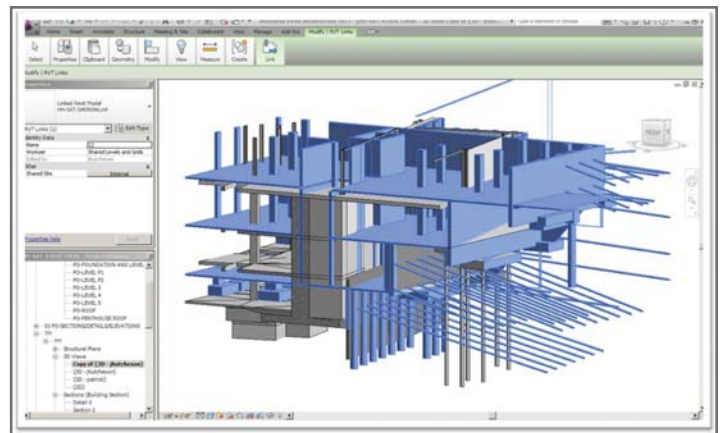
AN: Today there are greater regulatory requirements such as OSHPD, environmental laws, building codes, seismic safety, etc. This project is also a multiplicity of buildings and phases, where the H building was essentially a single building tying into the existing.

Q: How has construction changed from then to now?

KR: The design of the original H Building was drawn on drafting paper, called 1000H. It is a tough paper, where you could erase many times to change the design and the paper would still hold up. The building documents were 2-dimensional drawings. In order for the architect to be sure that the combined set of drawings coordinated with the architects and engineers, there was a huge effort at comparing each set of drawings with the others.



Today, the entire building is designed and documented on the computer... not on paper. The computer model is 3-dimensional. The model allows all the members of the design team, architects and engineers, to be sure they are all designing a coordinated building, where all the parts work correctly together.



Q: What do you think is the key to a successful project?

AN: Teamwork, trust and a collective sense of ownership come to mind. We have a great team of professionals from all the stakeholders who have one goal in mind, to produce a great building that will advance a great program that will serve the great citizens of Alameda County and beyond.