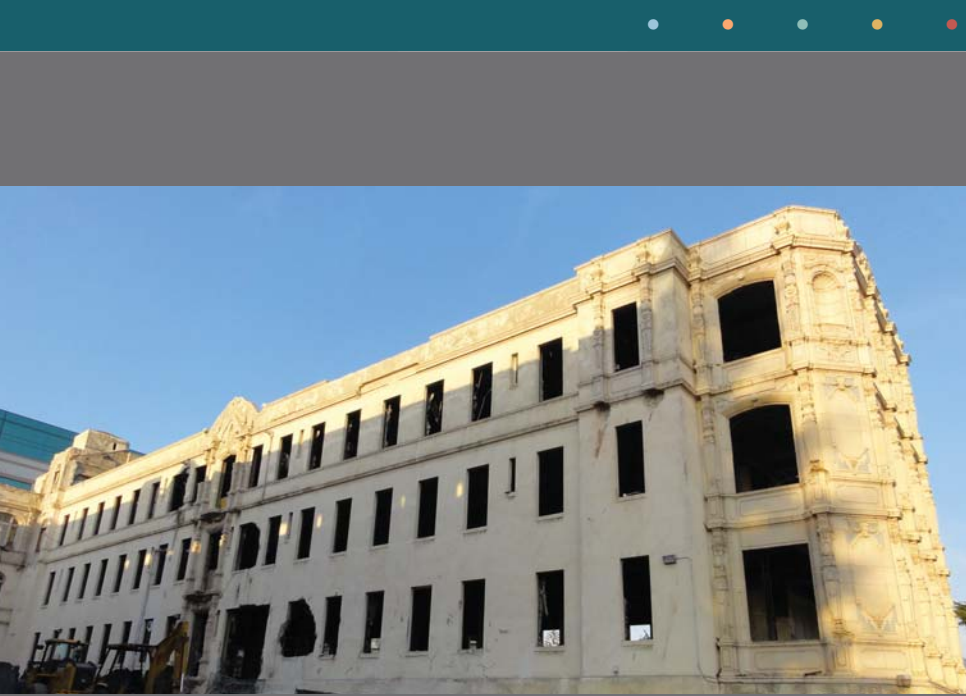


NEIGHBORHOOD UPDATE

HIGHLAND HOSPITAL
ACUTE TOWER
REPLACEMENT
PROJECT



We have completed interior demolition of the C, D and F wings, including the salvage of terra cotta elements. The photo above shows the wings in their current state. Structural demolition of the C, D and F wings is anticipated to begin in January 2012.

COMING SOON - the Acute Care Tower Webcam on www.HighlandATR.org

UPCOMING CONSTRUCTION ACTIVITIES

JANUARY 2012

- Installation of plumbing, HVAC, and electrical for the Specialty Care Center continues.
- Installation of site utility work for the Acute Care Tower continues.
- Demolition of the C, D, & F wings begins.

FEBRUARY 2012

- Installation of plumbing, HVAC and electrical for the Specialty Care Center continues.
- Installation of exterior walls for the Specialty Care Center begins.
- Installation of site utility work for the Acute Care Tower continues.
- Demolition of the C, D, & F wings continues.

MARCH 2012

- Installation of plumbing, HVAC and electrical for the Specialty Care Center continues.
- Installation of exterior walls for the Specialty Care Center continues.
- Installation of site utility work for the Acute Care Tower continues.
- Demolition of the C, D, & F wings continues.

FOR MORE INFORMATION

GENERAL SERVICES AGENCY

Ann Ludwig, Program Manager
County of Alameda
510-208-9552
ann.ludwig@acgov.org

ACMC INFORMATION

Jerri Randrup, Director of Corporate
Communications
Alameda County Medical Center
510-437-4732
jrandrup@acmedctr.org

PLEASE VISIT OUR WEBSITE AT WWW.HIGHLANDATR.ORG



The above dates are approximations. Neighborhood updates will be provided on a monthly basis and more frequently when needed.

**If you have immediate safety or nuisance concerns,
please call the 24-hour Highland ATR Hotline at
(510) 227-0392**

ACUTE TOWER REPLACEMENT PROJECT UPDATE

UNDERGROUND ELECTRICAL WORK FOR THE NEW ACUTE CARE TOWER

The underground electrical work on East 31st Street and Stuart Street for the new Acute Care Tower was completed on December 10, 2011. The ATR Project Team greatly appreciates all the supportive neighbors, cooperative ACMC staff, and the hard working subcontractors who helped complete the work.

Along with electrical work on East 31st Street and Stuart Street, gas lines on 14th Avenue for the new Acute Care Tower have also been completed. Now, we're ready to demolish the C, D, and F wings.



The two photos above are of the East 31st Street and Stuart Street underground electrical work for the new Acute Care Tower.

DEMOLITION OF THE NEW ACUTE CARE TOWER

Currently, the ATR Project Team has completed interior demolition of the C, D and F wings. This includes removal of all non-structural material such as flooring, windows, sheet rock, and heating and air conditioning systems, leaving only the concrete and steel.



Only the shell of the C, D and F wings remains. Interior demolition of these buildings is complete and demolition of the structures begins in January.

Now, the structural demolition of the wings will start. The same demolition techniques used for the V and VA Buildings, along Vallecito Place, will also be used for the C, D and F wings. This will involve large heavy equipment breaking off pieces of the concrete structure starting from the top and working towards the foundation. Watering the building during demolition is done to minimize the dust. In addition, air sampling and vibration monitoring is done to monitor and control demolition impacts. Demolition is anticipated to begin in January 2012.

COMPLETION OF STRUCTURAL STEEL OF THE SPECIALTY CARE CENTER

On December 21, 2011, the workers celebrated the completion of the Specialty Care Center Structural Steel work with an ATR Project BBQ. This is considered a major milestone for the ATR Project, and was completed ahead of schedule. Next, the project team will install the exterior walls of the Specialty Care Center.



The ATR Project Team BBQ, celebrating the completion of the Specialty Care Center Structural Steel.